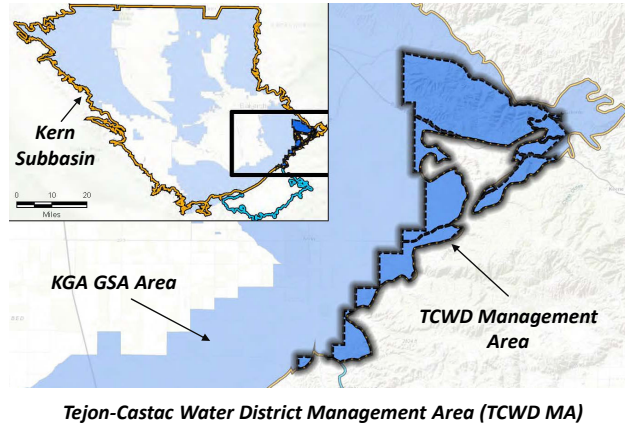


TCWD MA PLAN OVERVIEW

- Prepared by TCWD
- Covers the portion of TCWD within the Kern Subbasin, referred to as the TCWD Management Area
- Developed to meet SGMA regulatory requirements while reflecting local needs and preserving local control over water resources
- Process included active coordination and stakeholder engagement



BASIN AND LOCAL WATER BUDGETS HAVE BEEN COORDINATED AND WILL BE REFINED AFTER 2020

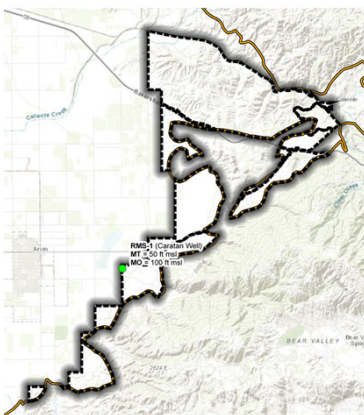
- Basin-wide Checkbook is a coordinated water budget approach for the entire Kern Subbasin that documents GSA-specific contributions to groundwater recharge
 - Total Supply: 13,110 AFY
 - Total Demand: 19,925 AFY
 - Balance/Deficit: -6,815 AFY
- All water budgets have uncertainty and will be refined as part of GSP implementation.
- Potential P/MAs may be developed in the future.

PROJECTS AND MANAGEMENT ACTIONS (P/MAS)

- Due to the MA's de minimus groundwater pumping, P/MAs are not necessary to ensure sustainability
- However, two P/MAs with supply augmentation benefits are included in the MA Plan that can be implemented to support sustainability:
 - Conversion of Granite quarry to Sycamore Reservoir (in partnership with AEWSD for up to ~6,000 AFY)
 - Recharge of Carrot Wash Water, currently being implemented by TRC in lands just outside of TCWD MA (~300 AFY)



SUSTAINABLE MANAGEMENT CRITERIA



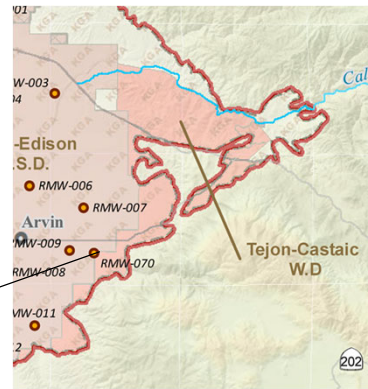
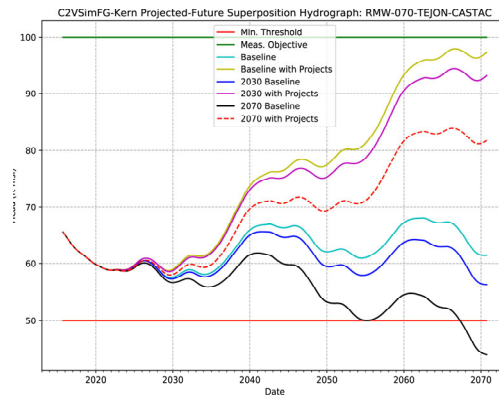
Minimum Thresholds (MT) and Measurable Objectives (MO) for Chronic Lowering of Groundwater Levels

- All SMCs have been closely coordinated with Basin GSAs and stakeholders

Sustainability Indicator	Site Type	Site Count	SMC Consideration
Chronic Lowering of Groundwater Levels	Well	1	Average historical low value for wells within Arvin-Edison Water Storage District (AEWSD) to the west of the TCWD MA
Reduction of Groundwater Storage	NA	NA	Groundwater levels will be used as a proxy
Degraded Water Quality	NA	NA	No unique MTs are set for this Sustainability Indicator
Land Subsidence	NA	NA	Groundwater levels will be used as a proxy

PROJECTED WATER LEVELS INDICATE NO SMC EXCEEDANCES

- Preliminary future model results including P/MAs suggest that Management Area will not have Undesirable Results at current monitoring well location*



TCWD CONDUCTED EXTENSIVE STAKEHOLDER OUTREACH

- Distribution of Stakeholder Surveys
- Direct outreach to Landowners and Well owners
- Active coordination with KGA members and other Basin GSAs
- Participation in Basin-wide Stakeholder Workshops

Public Meeting Type	Number of Meetings
KGA GSA Board Meetings	29
KGA GSA SGMA Stakeholder Workshops, Meetings, and Open Houses	29
TCWD Board Meetings	8
KGA Miscellaneous Meeting	69
Total Meetings to Date	135

TCWD DID NOT RECEIVE COMMENTS DURING 90-DAY COMMENT PERIOD

- Added additional discussion of water budget methodologies, including Checkbook, and incorporated the updated model results.